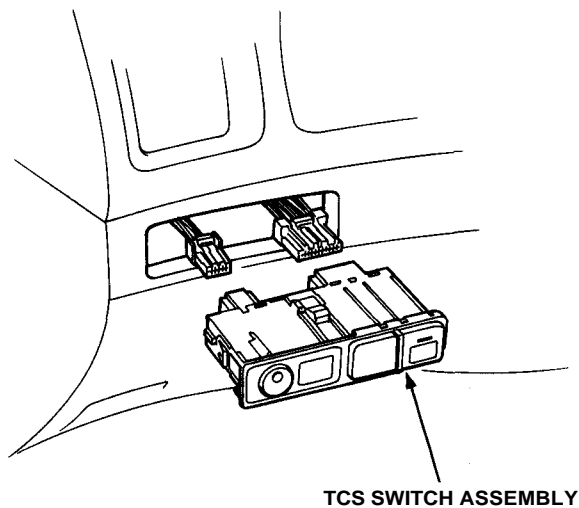


Electronic Components

TCS Switch Test

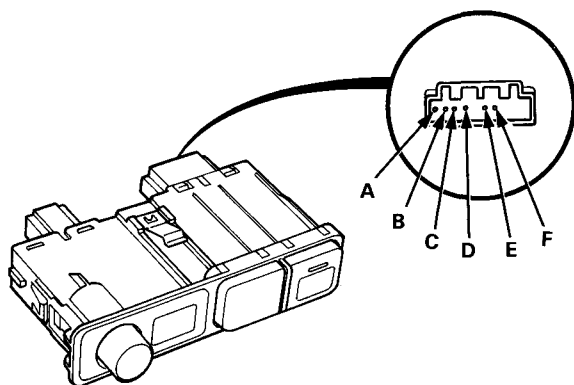
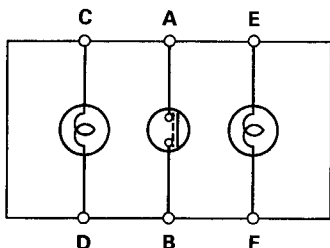
Remove the TCS switch assembly from the dashboard lower cover.



There should be continuity between the A and B terminals when the switch is pushed and there should be no continuity when the switch is released.

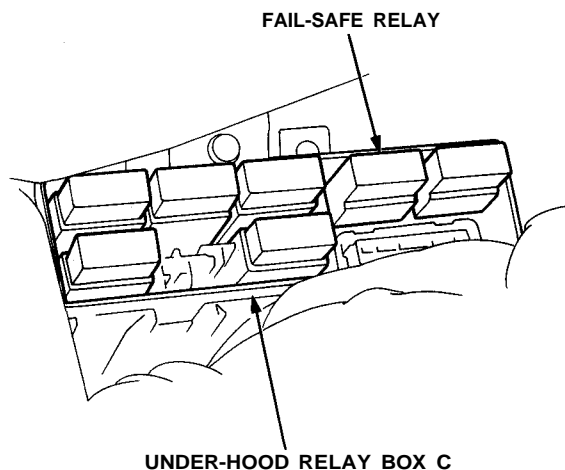
There should be continuity between the C and D terminals, and between the E and F terminals at all time.

A—B: Switch
C—D: Indicator light
E—F: Illumination light



Fail-Safe Relay Test

Remove the fail-safe relay from under-hood relay box C.



There should be continuity between the No. 2 and No. 4 terminals when the battery is connected to the No. 1 and No. 3 terminals. There should be no continuity between the No. 2 and No. 4 terminals when the battery is disconnected.

